



New Epoch , New Energy

WORK TOGETHER
FOR A WIN-WIN

New Beginning

Renewable energy,energy saving
and environment friendly,let us
with Epoch for a better future.



Power Your Car



PV+ESS Integrated System

EPOCH 10.36KW



Product details

- The PV integrated machine is an integrated solution that integrates the solar inverter and the PCS to realize "PV + energy storage". The modular design of the system enables flexible configuration of PV modules, batteries and loads. Through smart innovation, the solar energy is preferentially allocated to the energy storage battery or load power supply to meet the multi-scenario application on the user side.

Long-Lasting

- 10.36kW PV modules can generate about 50 to 60kWh within 8 hours a day. Except the daily use, built-in energy storage system can store excess electricity for standby.

Convenient Transportation

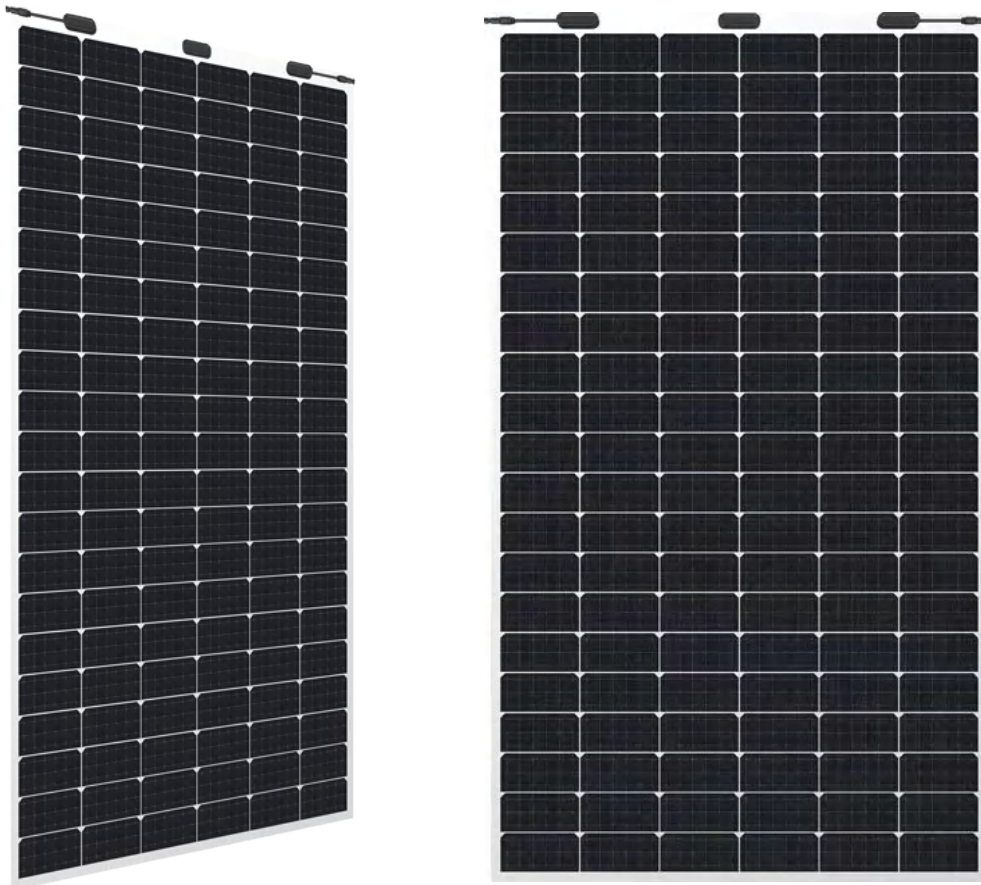
- The integrated system is compact and flexible after settled, and can be transported in the form of container.

Simple Installation

- After unloading from the container, it can be deployed on the ground and used immediately.

MWT Flexible monocrystalline silicon high-efficiency PV Module

EPOCH 365-385W



Lightweight and ultra-thin design

- The weight of the module is as light as 5.7kg and the thickness is as thin as 2.5mm, meeting the requirements of various low-load projects

Ultra-high flexibility

- Ultra-thin silicon chips and advanced organic polymer packaging materials are used for ultra-high flexibility and toughness, with a minimum bending radius of 0.30m, which can perfectly fit various curved roofs

Efficient and reliable

- There is no main grid at the front to improve the PV conversion efficiency, and the power generation performance is excellent under weak light conditions

Customizable

- Products can be customized to meet the needs of different application scenarios

Convenient installation

- Convenient and fast installation and transportation, saving a lot of installation and transportation costs

Lead-free environmental protection

- Adhering to the concept of green PV design, with the lead-free technology and materials

Model	SPP365EH	SPP370EH	SPP375EH	SPP380EH	SPP385EH
Performance parameters (Pm)					
Maximum power (Pm)/(w)	365	370	375	380	385
Power tolerance			0~+5		
Optimal working voltage (Vm)	34.9	35.1	35.3	35.5	35.7
Optimal working current (Im)	10.46	10.54	10.62	10.70	10.78
Open circuit voltage (Voc)	42.4	42.6	42.8	43.0	43.2
Short circuit current (Isc)	11.09	11.16	11.23	11.30	11.35
Effective efficiency of components	20.7	21.0	21.2	21.5	21.8
STC:AM=1.5, Irradiance 1000W/m ² , Module temperature 25, maximum power test uncertainty ±3%					

Performance parameters (NMOT)					
Maximum power (Pm)/(w)	274	278	282	286	290
Optimal working voltage (Vm)	32.8	33.0	33.2	33.4	33.6
Optimal working current (Im)	8.35	8.42	8.49	8.56	8.64
Open circuit voltage (Voc)	39.9	40.1	40.3	40.5	40.7
Short circuit current (Isc)	8.91	8.98	9.05	9.12	9.19
NMOT: irradiance 800W/m ² , Ambient temperature 20, wind speed 1m/s					

Temperature coefficient	
Rated operating temperature of battery (NMOT)	43±2°C
Power temperature coefficient	-0.36%/°C
Voltage temperature coefficient	-0.28%/°C
Current temperature coefficient	0.06%/°C

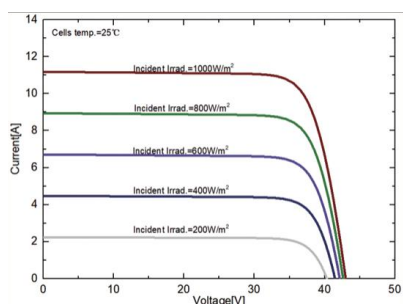
Mechanical Capacity	
Installation dimension (WxDxH)(mm)	1840×1040×2.5
Weight	5.7 kg
Backing material	Backboard (white)
Cell	126 (21x6)/single crystal/half piece
Packaging materials	POE
Frame	No frame
Protection grade of junction box	IP68
Cable specification (length/sectional area)	Customized according to customers/4mm ²
Connector	MC4 compatible
Bending radius	0.3m

Working conditions	
Maximum system voltage	DC1500V(IEC)
Maximum fuse rated current	18A
Operating temperature range	-40°C~+85°C

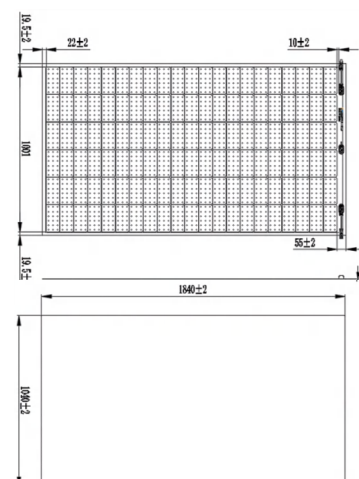
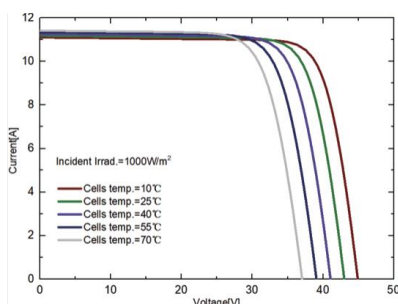
Package			
Type of shipping	container	Platform trailer	Platform trailer
Specifications	40'HQ	13m	17.5m
Number of Modules percontainer	1104	1196	1564
Number of Modules per pallet	46	46	46

IV - Curve Module Size

I-V curve under different irradiance(SPP375QHES)



I-V curve at different operating temperatures (SPP375QHES)



E-Star-DH1

RESIDENTIAL SERIES



Product characteristics

- PV reverse polarity protection/Island protection
- AC short circuit/over voltage protection
- DC/AC Surge protection
- IP65 protection level, low noise<35dB
- Battery reverse polarity protection
- MPPT voltage range 180V-850V
- Overload capacity up to 130%
- Support full power discharge, battery charge and discharge automatic management

Hybrid Inverter	ESI-8KW-H3	ESI-10KW-H3	ESI-12KW-H3
PV Input Data			
Maximum input power (kW)	10.4	13	15.6
Maximum input voltage (V)		1000	
MPPT operating voltage range (V)		180~850	
Number of MPPT /strings per MPPT		2/1	
Maximum input current (A)		12.5/12.5	
MPPT Efficiency		99.50%	
Maximum efficiency	97.90%	98.20%	98.20%
Battery efficiency		96.80%	
Euro Efficiency	97.20%	97.50%	97.50%
AC parameters (Grid tie)			
Rated output power (kVA)	8	10	12
Rated Voltage(Vac)		3L+N+PE,400/360~440	
Rated frequency(Hz)		50/60	
Maximum output current (A)	12.7	15.9	19.1
Power factor range		0.8 leading ~ 0.8 lagging	
Current Total Harmonic Distortion (@rated power)		<3%	
AC output parameters (Off grid)			
Rated power (kVA)	8	10	12
Rated output voltage (Vac)		3L+N+PE,400	
Rated output frequency (Hz)		50/60	
Maximum output current (A)	12.7	15.9	19.1
Auto switch time (ms)		<20	
Overload capacity		110%,30S/120%,10S/150%,0.02S	
Battery Output Data			
Maximum charging voltage (V)		600	
Battery Voltage Range(V)		125~600	
Rated charge / discharge current (A)	40	40	50
Communication Interface		CAN	
General Data			
Topology		Transformerless	
Display		LCD	
Meter communication mode		RS485/GPRS/WIFI/DRM	
Dimensions(WxDxH)(mm)		530 x 200 x 600	
Weight(kg)		29	
Certificates	IEC/EN62109-1/-2; IEC/EN61000-6-1&3;EN50549;VDE 4105-AR-N;NCRfG/PTPIREE;NTS;UNE;OVE		
Battery Model		ES-256V32AH	
Battery Pack Data			
Cell type		Li-ion(LFP)	
Battery Capacity(Ah)		32	
Storage Capacity (kWh)		8.2/16.4/24.6/32.8/41/49.5	
Depth of Discharge(DoD)		90%	
Rated voltage (V)		256	
Operating voltage range (V)		240~288	
Cycle life		10000*	
Dimensions(WxDxH)(mm)		580 x 230 x 820	
Weight(kg)		75	
Certificates		IEC62619,UN38.3	
System			
Working temperature range		-10°C~50°C**	
Working altitude (m)		No derating below 2000m	
Noise Figure (dB)		<35	
Cooling method		Natural Convection	
Protection class		IP65	
Humidity		0~95%	
Warranty		5 years (optional 10 years)	

* Under specific test conditions

** When the ambient temperature is too low or too high, the performance of battery may be limited.

ESI-EH



EV Charger

EPOCH 3.5/11KW



ESI-3.5kw-EH

- 1. Bluetooth connectable, support APP flexible operation
- 2. Intelligent dual temperature controlling, avoid overheating during charging
- 3. Support dual reservation charging of APP/ device
- 4. 4 stages of current adjustable, good compatibility
- 5. Patented adapter, more intelligent switching
- 6. IP66 protection upgrade, no fear of dust and rain
- 7. Assured by PICC, worry-free use
- 8. Grounding reminder, power supply reassurance

ESI-11kw-EH

- 1. Online app management, intelligent and convenient
- 2. 9 Safety protections, more safe to use
- 3. Share free charging with families and friends
- 4. Support appointment charging, which saves more money

Model	ESI-3.5kw-EH	ESI-11kw-EH
Product parameters		
Power Max(KW)	3.5	11
Voltage (V)	220	380~AC
Electric current (A)	16	32
General parameters		
Product size(HxWxD)(mm)	245x100x60	345x192x115
Length(M)	5/10/15/20	6
Usage	Plug and Play	Swipe charging, Bluetooth connection
Protection grade	IP66 (Control box), IP55(Gun head - coupling state)	Enclosure protection grade IP55
Working temperature	-20°C~+50°C	-20°C~+50°C
Cable specification	EV-(R)EYS90 3x6mm ² +2x0.75mm ²	EV-(R)EYS90 3x6mm ² +2x0.75mm ²
Standards	Q/GM SX0101002-2022	GB/T 18487.1-2015

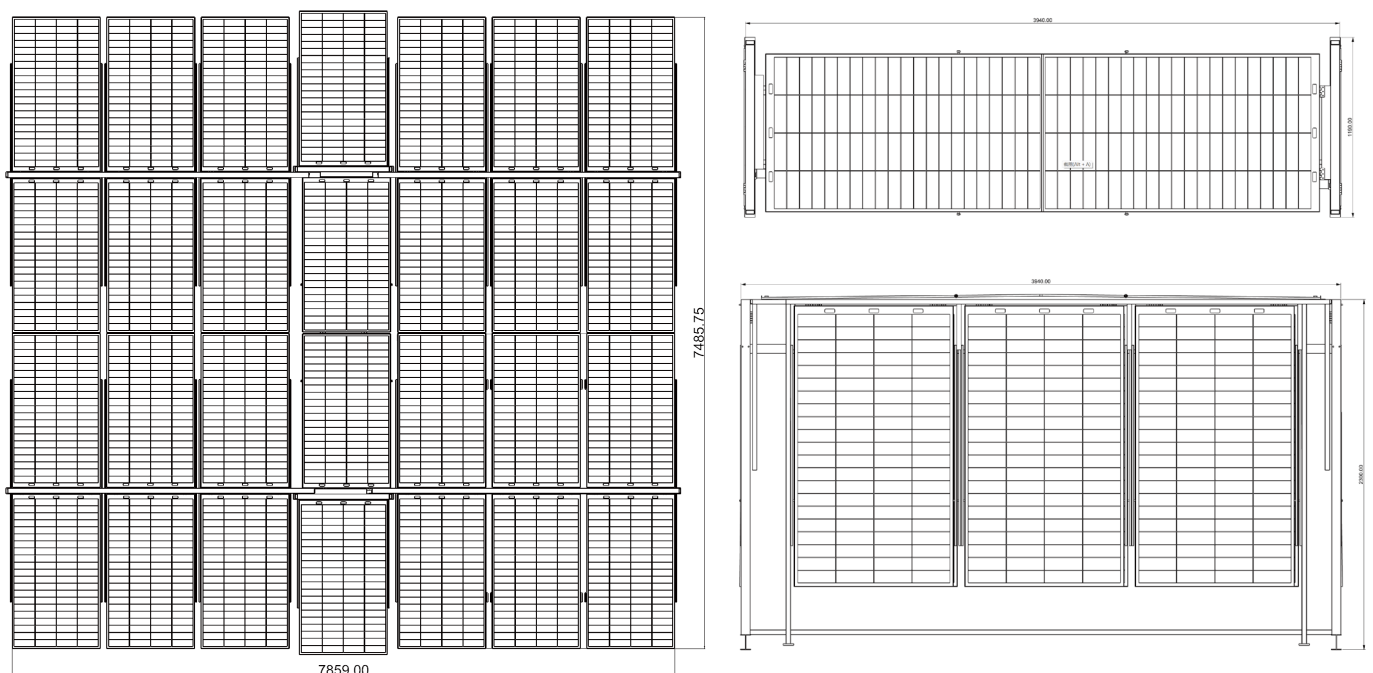
ESI-3.5kw-EH

- 1. Smart and convenient charging, safe and convenient
- 2. Operate on the mobile phone for charging
- 3. 4 stages of current can be easily adjusted and the speed can be freely selected
- 4. Intelligent dual-temperature controlling design does not overheat when charging

ESI-11kw-EH

- 1. Protect the car & people
- 2. Remote start and stop can also be charged at will when traveling
- 3. Share charging with friends and relatives for free
- 4. Support Tesla full-line charging Support mainstream EVs

Size of PV modules of the integrated system





Jiangsu Epoch Energy Technology Co., Ltd.

Website

<http://www.epoch-esspv.com/>

Address

Jiangsu Epoch Technology Co Ltd 1306, Block B, Jianghai Fortune Building, Qinzhao Subdistreet,
Chongchuan District, Nantong City

Telephone

+86 137-6430-8446

+86 176-2585-0655

Mailbox

ven.li@epoch-esspv.com

epoch@epoch-esspv.com

Text and images correspond to the current state of technology at the time of printing. Subject to modifications.
All information is without guarantee in spite of careful editing – liability excluded.